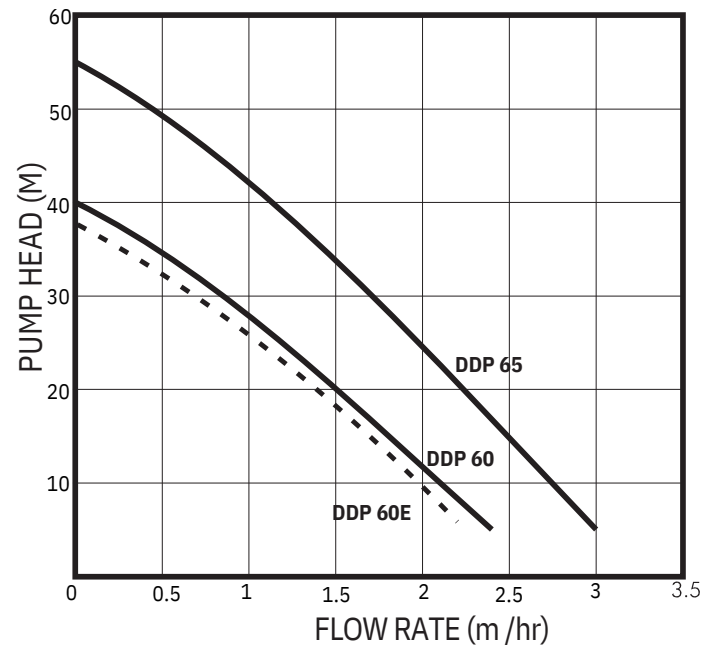


## DDP DOMESTIC PUMPS



### Performance Curves



### Typical Applications

#### PUMPS

The Dayliff DDP peripheral pump is specially designed for all small scale domestic and commercial water supply uses. It is of high specification peripheral featuring copper windings, a high capacity motor and stainless steel housing inserts to ensure free impeller movement. The pump body is manufactured from cast iron and impeller from brass.

DDPE60E is of lighter construction and does not feature stainless steel housing inserts.

#### MOTORS

Pumps are close coupled to reliable TEFC electric motors designed for continuous operation and are provided with a thermal cutout to protect against electrical overload. They can be connected directly to the mains power supply through a 10A fuse or MCB.

**Enclosure Class:** IP44 **Insulation Class:** F **Speed:** 2900rpm

**Voltage:** 1x240V

#### OPERATING CONDITIONS

**Pumped Liquid:** Thin, clean, chemically non-aggressive liquids without solid particles or fibres

**Max. Fluid Temperature:** +60°C

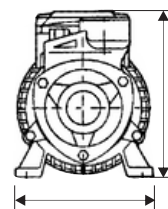
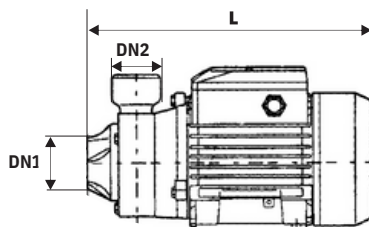
**Max. Ambient Temperature:** +40°C

**Max. Suction Lift:** 7m at sea level

#### PUMP DATA

### Technical Data

Model	Motor kW	Full Load Current (A)	DN1 (")	DN2 (")	Dimensions (mm)			Weight (kg)
					L	W	H	
DDP 60E	0.37	1.8	1	1	254	118	150	4.4
DDP 60	0.37	2.5	1	1	265	118	151	5.3
DDP 65	0.75	5.2	1.5	1.5	305	136	181	10



E\*=Maximum diameter of the pump inclusive of cable guard and motor